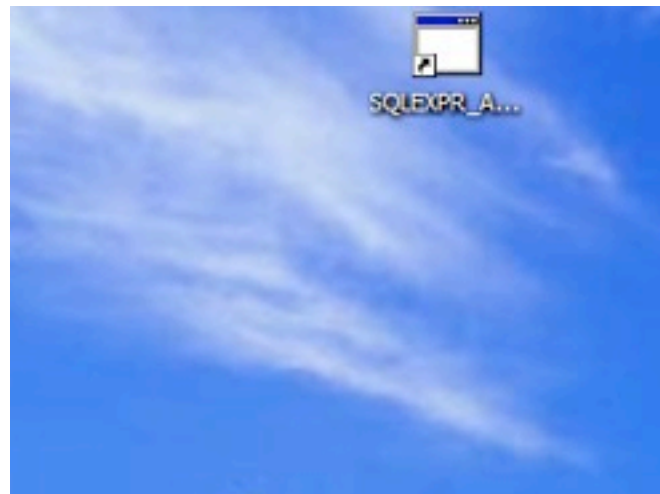


Ben Clark-Robinson
1st November 2007

MULTITRACKER INSTALLATION GUIDE

This document is designed to assist in the installation of MultiTracker, specifically SQL Server 2005 Express. While the document will briefly cover running MultiTracker for the first time, it is mainly designed to assist on how to install Microsoft SQL Server 2005 Express Edition and further-more how to “open it up” to allow MultiTracker to run across a LAN.

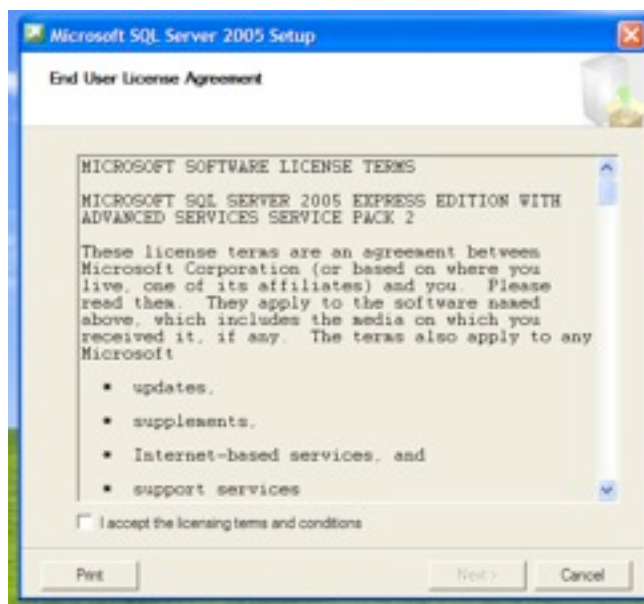
Step 1 - Locate and Run SQL Server 2005 Express Installer

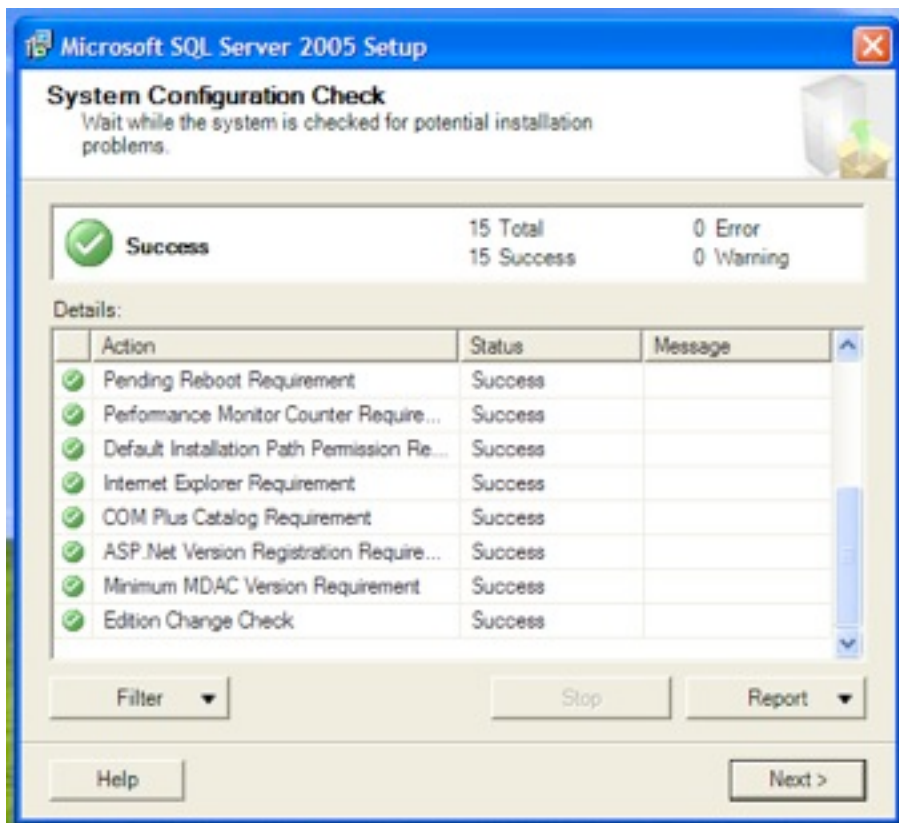


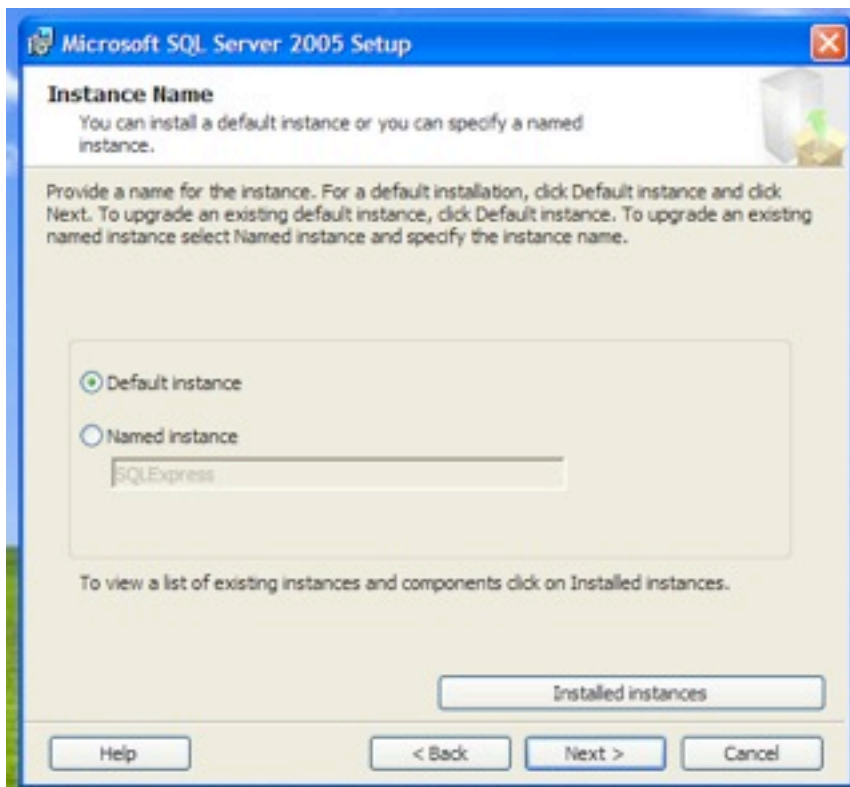
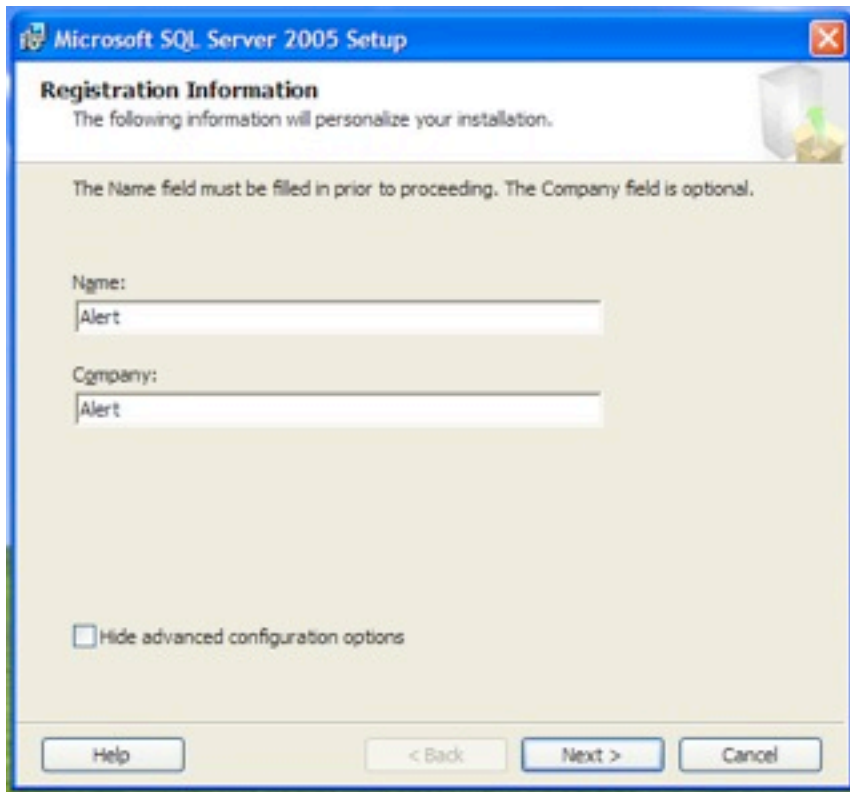
Copy the SQL Express installer to the desktop, then double-click the icon.

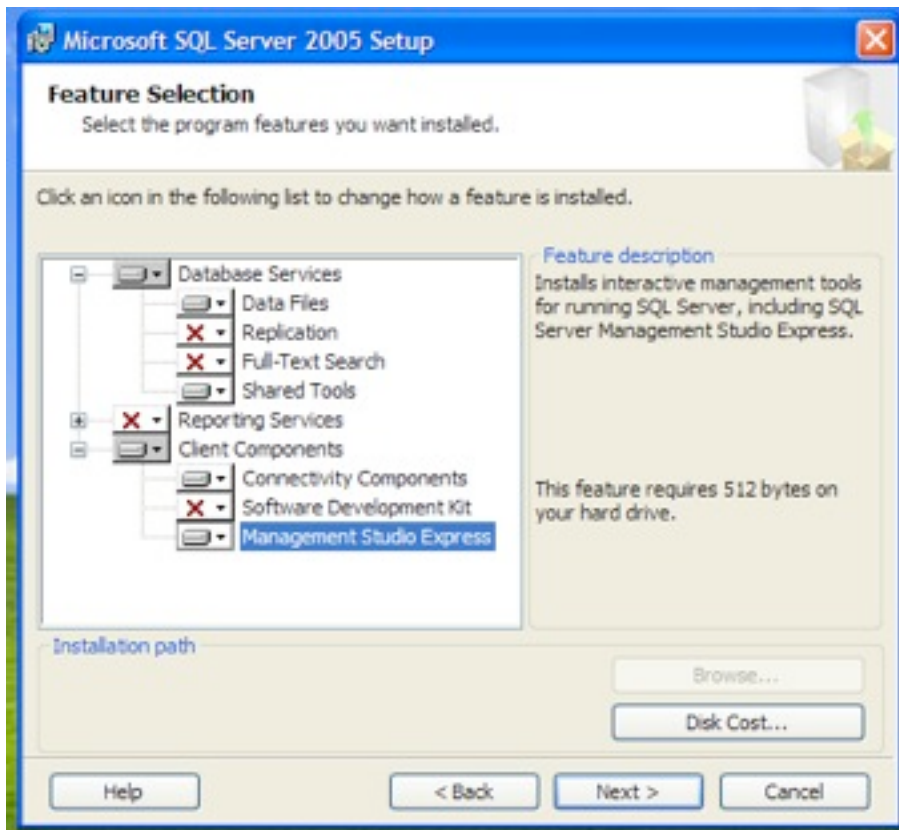
Step 2 - Installing SQL Server 2005 Express

Simply follow the images of the installer shown below.

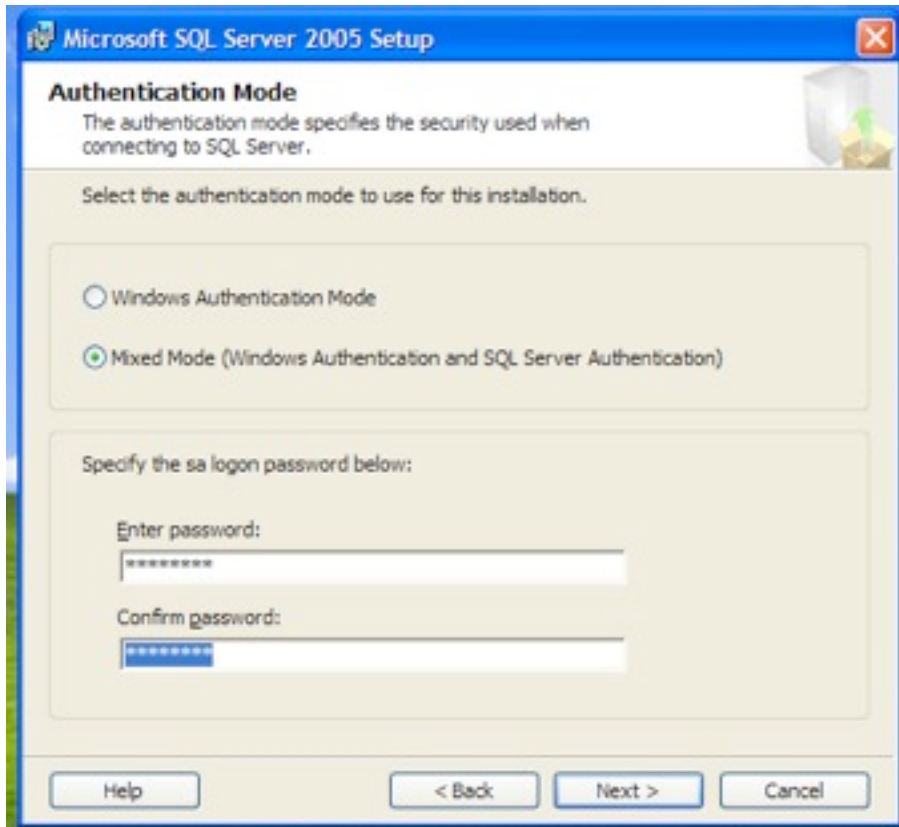








Make sure you select the same options and shown above.

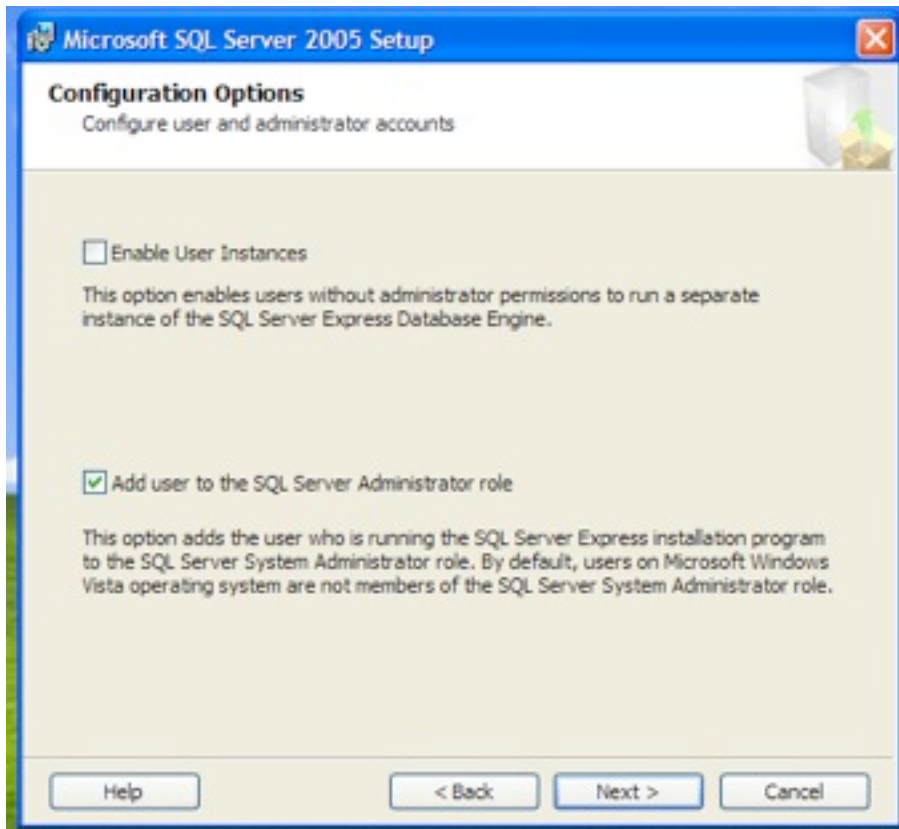


Ensure you select the Mixed Mode option,

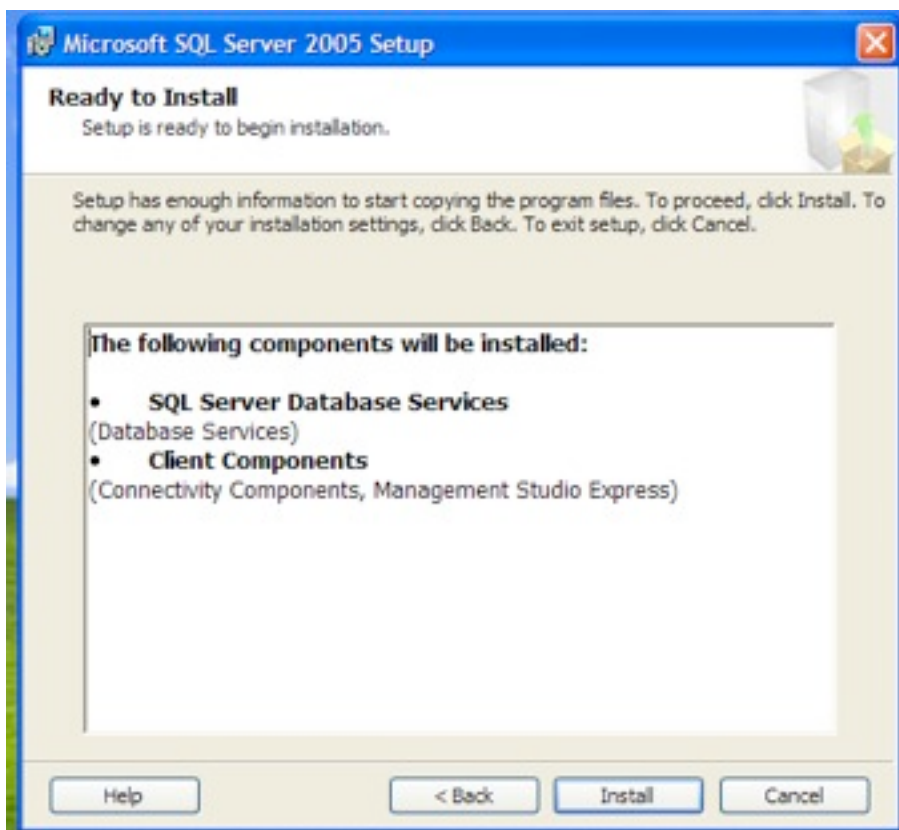
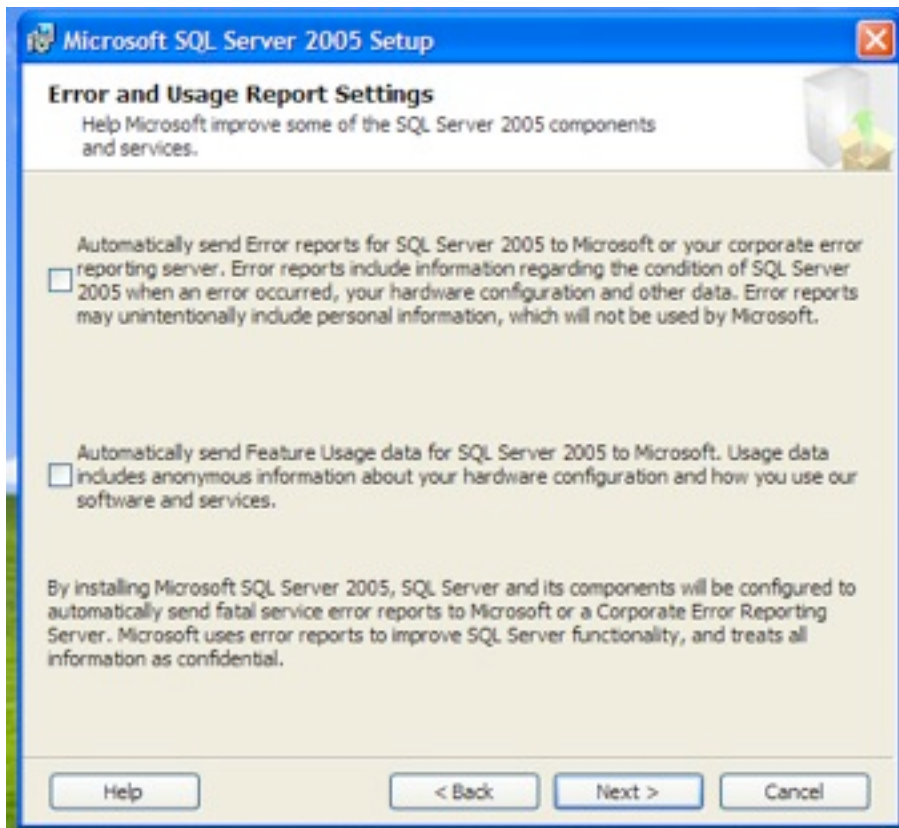
Enter the password as: (if you can't tell I'm a bit of a fan of The Lord of the Rings)

one@ring

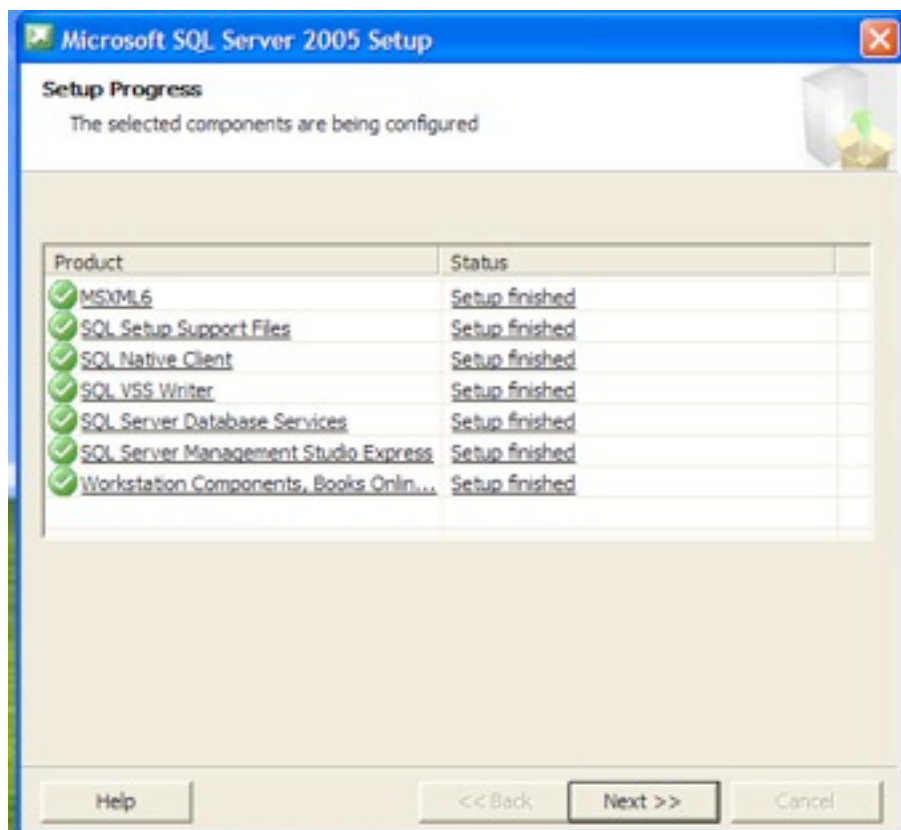
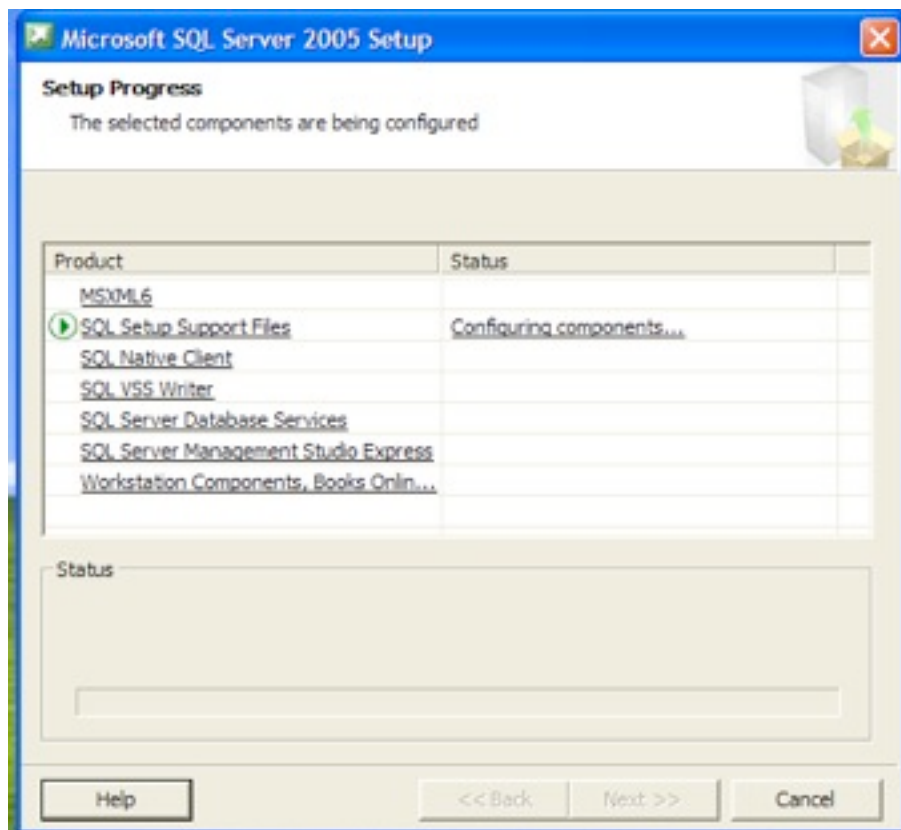
You can choose a different password, just remember to substitute your own password when I make reference to "one@ring".

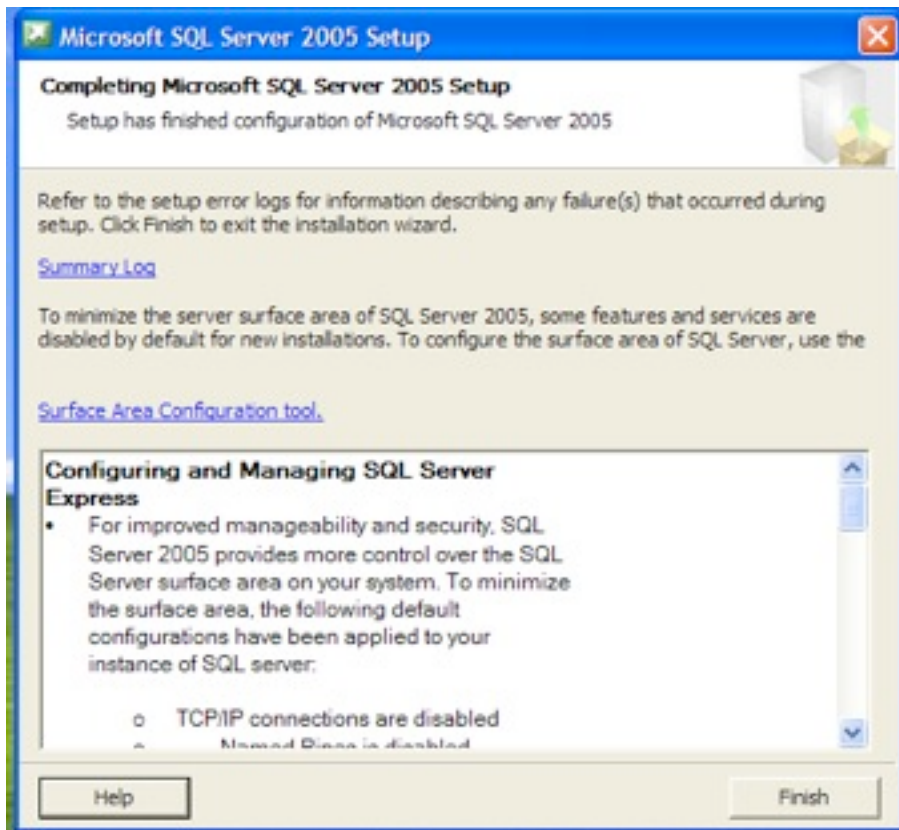


Again, make sure you select the correct tick boxes.



This will begin the installer:





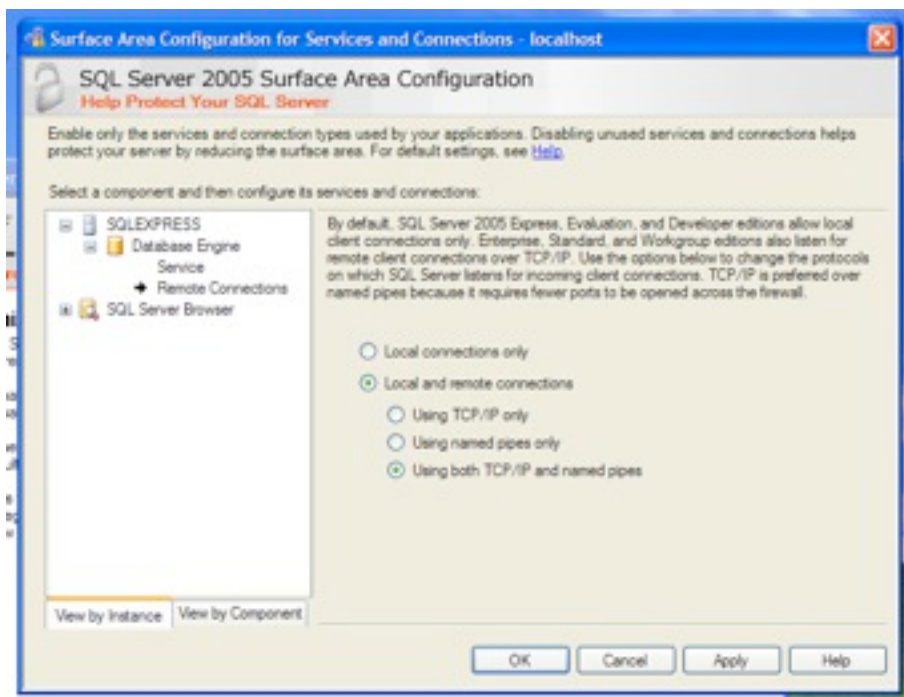
The installation, while taking a long time, should have gone smoothly.

Step 3 - Configure SQL Server (Opening it Up)



Click Start > SQL Server 2005 > Tools > Surface Area Configurator.

Click Surface Area Configuration for Services and Connections...

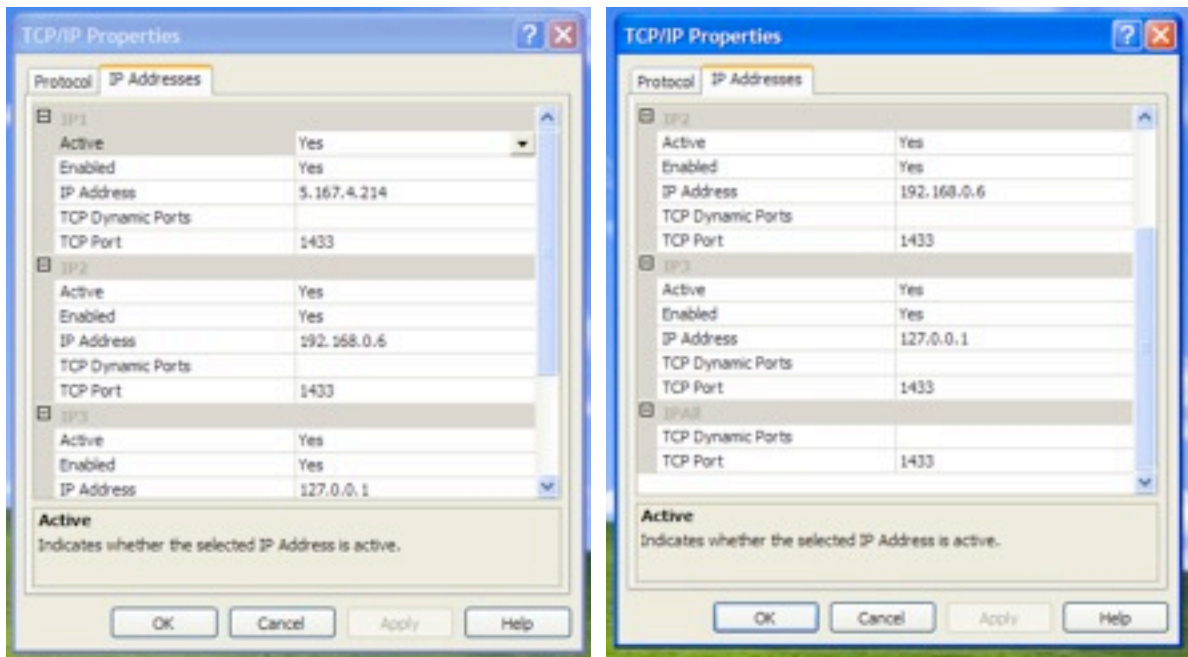


Ensure that Local and remote connections is selected, as should be Using both TCP/IP and names pipes.

Click Start > SQL Server 2005 > Tools > Configurator

Find the Protocols section and Right-Click the TCP/IP and select Properties

Ensure that the required interfaces are Enabled = Yes and that the Port = 1433 (dynamic port should be blank). Here's an example:



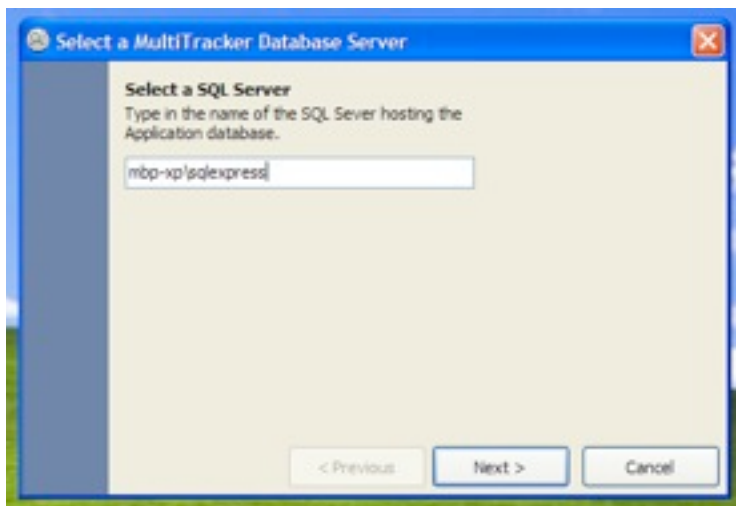
Step 4 - Configure SQL Server 2005 Express for MultiTracker



Double-click the MultiTracker icon.

This will be the first time that MultiTracker will have been run, and it will need to be Connected to SQL Server and the SQL Server permissions be configured.

Requirement: This step must be performed on the same computer that SQL Server 2005 was installed on.



MultiTracker needs to be told the name of the computer where SQL Server was installed. In this case the computer name was MBP-XP.

Add the \sqlserv text to the end of the computer name. This is a requirement as SQL Server 2005 by default runs in instances.

Note: If the SQL Server 2005 you are connecting to was already installed, it may or may not be running as an instance. If connecting to SQL Server fails, try connecting without the \sqlexpress instance.

Click Next >

Step 5



MultiTracker supports either SQL Security or NT Security. NT Security typically requires configuration of the Windows Active Directory and is outside the scope of this document.

Choose Use SQL Username and password

Click Next >

Step 6



You should now receive a failure notice, that's ok because we now have to configure SQL Security.

Click the Create Application specific SQL user button

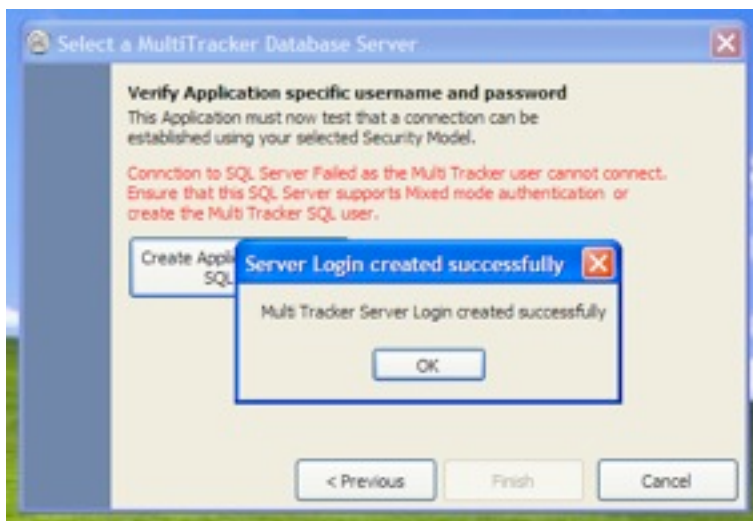
Step 7



Now enter the SQL Server 2005 password we created while installing it. In this case one@ring

Note: If you changed the SQL Password from the default in this document make sure you use that now.

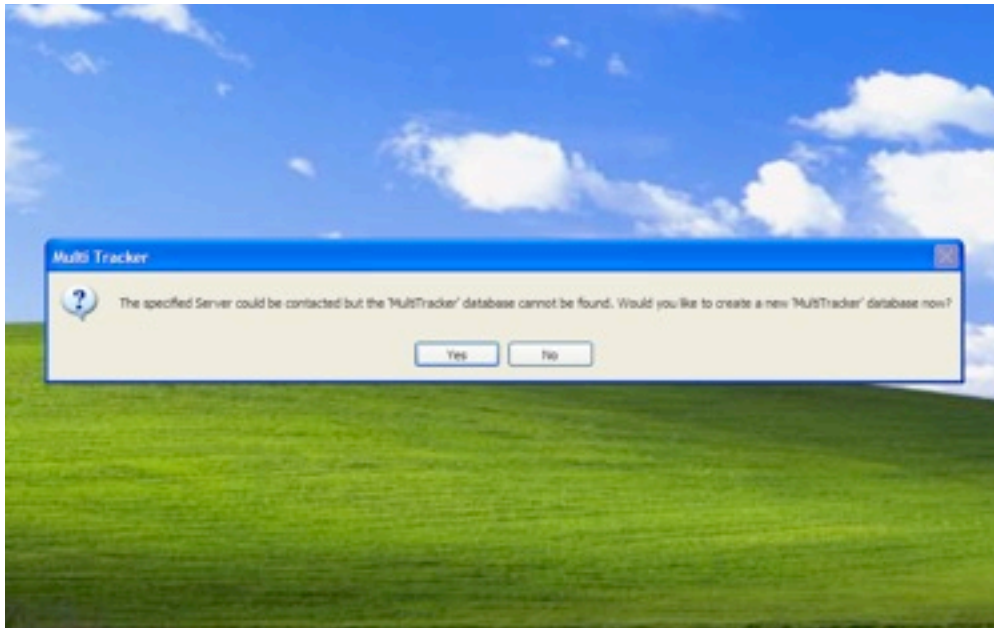
Step 8



The Login should now have been created.

Click Next > and you will see the message Connection to SQL Server OK

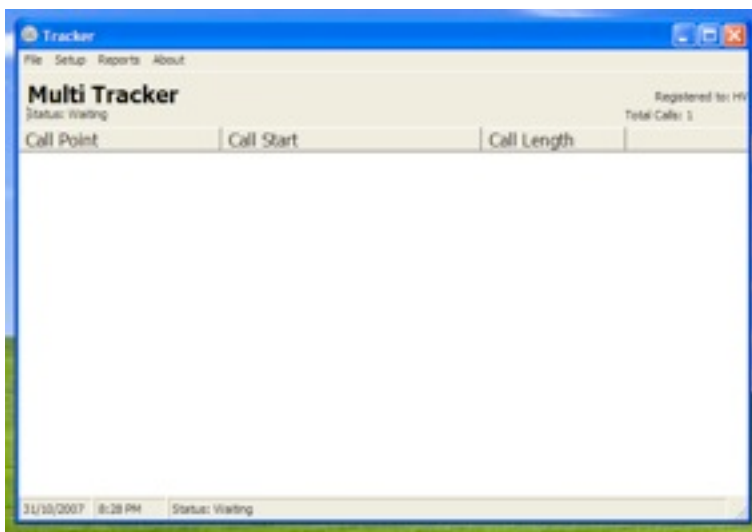
Step 9 - Create the MultiTracker database



Now that we have established a connection to the SQL Server, MultiTracker informs us there is no database to use. That's ok, let's create one now.

Click Yes to create a new MultiTracker database.

If the database is created successfully MultiTracker will open and be ready for use.



Connecting MultiTrackers together

To get other MultiTrackers to connect to SQL Server simply install the application on a different workstation and double-click the icon. You will be greeted to the installation wizard from Step 4 of this document, now follow this wizard skipping Steps 6 & 7 (you don't need to create the SQL Server Login again).